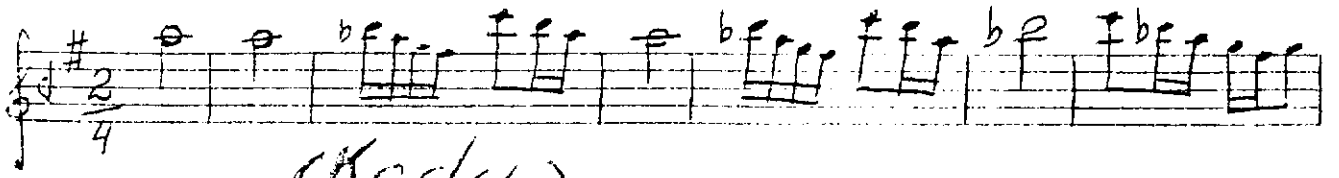
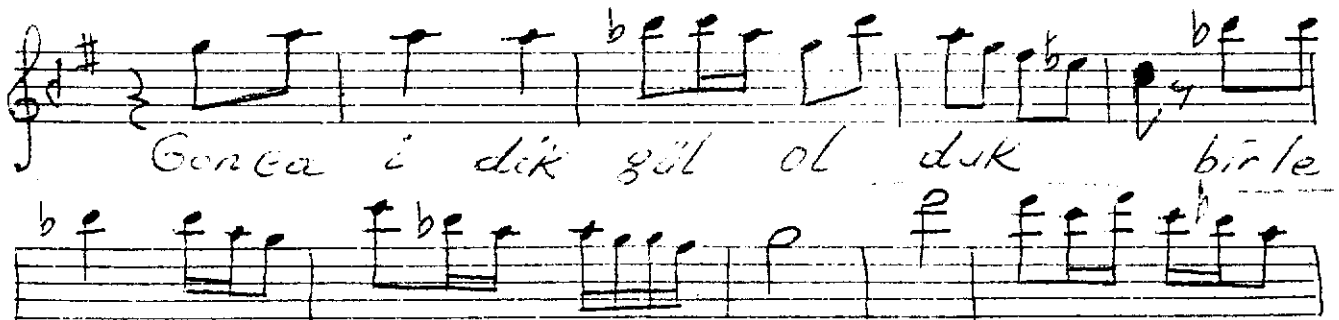
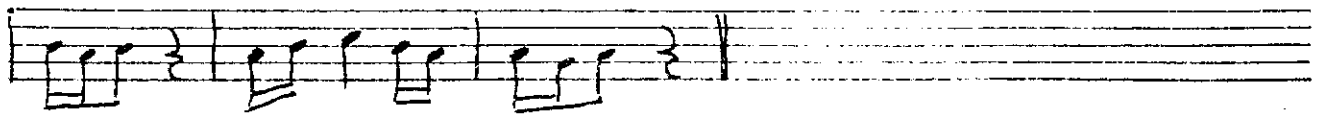
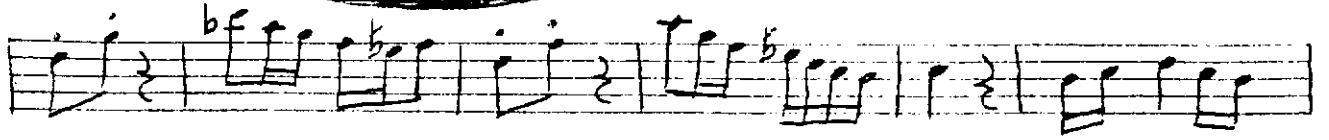


Değirmenler Gence İdik



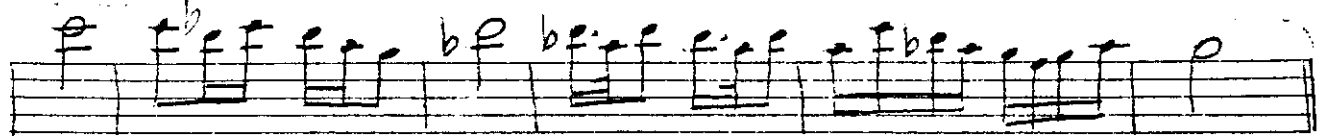
(Koda)



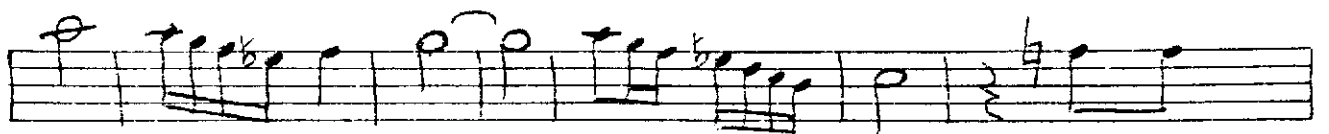
Gence i dik göl ol duk birle



sen gö. nöl ol duk



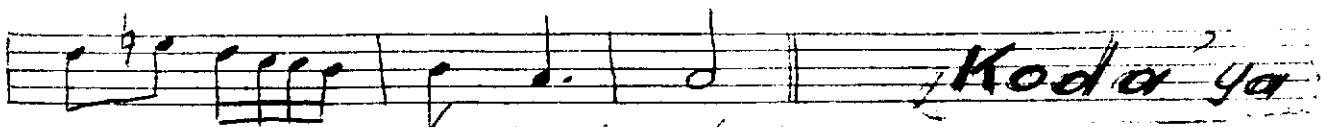
Sevda bahçe le rin de ah



Ah Ah şa ke



Yan bül bül ol duk şa ke



Yan bül bül ol duk

Koda ya

Bu sa a det ne tat'le ne tat'le
 bir e mel di neş e miz den
 her ta raf sen len di di le gel
 di Bül'bül ler coş tu yer yer
 ses ler şö şe yük sel di

Merhum Ahmed Gâzân'ın
 el yazması.

kurumlar